

# ALEXANDRIA COIN CLUB NEWS

Volume 23, Number 2

Alexandria, Virginia

February 2015



## ACC Meets February 18<sup>th</sup>

### Coin Show Pictures Page 4



**President:** Brandon Guilliams  
**Vice Pres/ANA Rep:** Frank Falgiano  
**Secretary:** Doug DeBarr  
**Treasurer:** Alan Melberger  
**Auction Chair:** Robin Borum  
**Auctioneers:** Frank Falgiano & Joel Cherry  
**ESNA Rep:** OPEN  
**MWNA Rep:** Brandon Gilliams  
**Microscope Coord:** Robert Mitchell  
**Refreshments Coord:** Ed Hacke  
**YN Director:** Pete Locke  
**Webmaster:** Boots Barnes  
**Newsletter Editor:** Bob Patterson

#### ***Tentative Meeting Agenda:***

*7:00pm Bourse opens – please help yourself to refreshments!*

*8:00pm Meeting begins: welcome, announcements, discussions, speakers.*

*8:10pm Auction begins. Door prize drawing and raffle held at intermission.*

*9:30pm Settlement of auction accounts, submission of coins for next auction, adjournment.*

#### **Alexandria Coin Club**

P.O. Box 1233 Alexandria, VA 22314  
www.alexandriacoinclub.com  
Member ANA, ESNA, VNA

## Alexandria Coin Club

The Alexandria Coin Club meets on the 3rd Wednesday each month, at the Lee Center, 1108 Jefferson St. in Alexandria, VA. It's just off US 1 inside the Beltway; there's plenty of free parking.

Meetings are held in the Gold Room. Check the lobby bulletin board just to be sure! The bourse opens at 7:00 pm and members may display, trade, and sell coins during this time.

Our auction starts about 8:10 pm. Members and visitors can bid during the bourse and auction. Members are encouraged to submit coins to be included in future auctions – contact Auction Chairman Robin Borum at 703-395-3269 or RBorum@verizon.net.



#### **In this issue:**

<b>ACC Dues</b>	<b>page 2</b>
<b>ANA Word Fairs</b>	<b>page 2</b>
<b>Snow or Storm Rules</b>	<b>page 2</b>
<b>Raffle Tickets</b>	<b>page 2</b>
<b>Area Shows</b>	<b>page 3</b>
<b>ACC Dealers</b>	<b>page 3</b>
<b>ACC Coin Show</b>	<b>page 4</b>
<b>Special Announcement</b>	<b>Page 5</b>
<b>Auction Guide Lines</b>	<b>page 5</b>
<b>ACC Auction Items</b>	<b>page 6&amp;7</b>

## ACC Secretary Collecting Dues for 2015



Alexandria Coin Club annual dues of \$15 for 2015 are due. You can pay your dues at the February meeting. The ACC Secretary Doug DeBarr, requests that you pay by check, as this eases the record keeping. Make checks payable to *Alexandria Coin Club*. Cash will be accepted providing you have the correct change (\$15). Thanks.

---



## BE SURE TO BUY A RAFFLE TICKET

Help support the club's Refreshment Fund, buy a raffle ticket and win a valuable coin. The proceeds from the raffle ticket sales help purchase the free coffee and donuts for each meeting.

---

## Snow or Storm Rules!

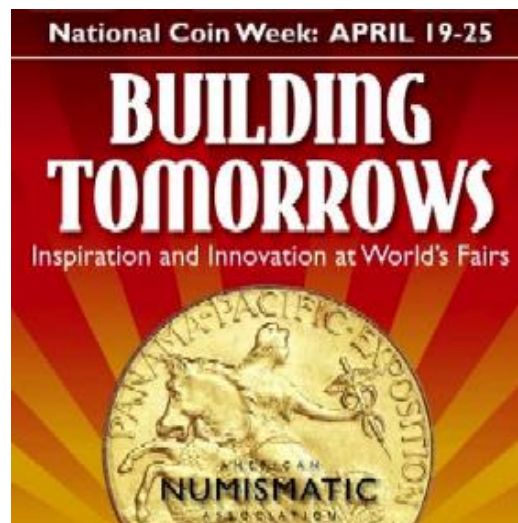
The rules are simple – if the Alexandria Public Schools are closed that day or evening, we have no meeting. Local radio and TV stations report which schools are closed when the snowfall or storms occur. So if in doubt tune in to the local news.



Due to expected inclement weather the January meeting was cancelled, however there were 15 brave members that weathered the light rain and enjoyed an evening of fellowship, coffee, donuts, and some coin sales. The January auction was postponed to the February meeting.

---

*Next month's ACC meeting  
is March 18th*



## ANA Readies 2015 National Coin Week "WORLD'S FAIRS"

The theme of the American Numismatic Association 2015 National Coin Week this April will honor some of the world's most important get-togethers.

"Building Tomorrows: Inspiration and Innovation at World's Fairs" will celebrate the history of these great events and the 100th anniversary of the 1915 Panama-Pacific International Exposition in San Francisco. The world's fairs and expositions are remembered as the places where some of the most important achievements in science, architecture and social progress were put on display.

The ANA puts on National Coin Week each year during the third week of April. The 2015 celebration will take place April 19 to April 25.

For more information, go to [www.money.org](http://www.money.org)

---





## Show Schedule

(confirm before going)

February 21-22, 2015

Also May 23-24, 2015

### **Frederick Coin & Curr. Show**

Elks lodge, 289 Willowdale Dr.

Frederick, Maryland

443-623-7025

July 23-24, 2015

### **Annandale Coin. Show**

NoVA, 8333 Little River TP

Annandale, Virginia

703-385-0058

March 8, 2015

### **Annapolis Coin & Currency Show**

Knights of Columbus Hall

2590 Solomon's Island Rd.

Edgewater, Maryland

443-623-7025



## Have a Question? Need Some Help? Contact an ACC Dealer!

Robin Borum	Robin Borum Rare Coins	703-395-3269
	<a href="http://www.RBrarecoins.com">www.RBrarecoins.com</a>	<a href="mailto:rborum@verizon.net">rborum@verizon.net</a>
Joel P. Cherry	MERCURY Numismatics	703-876-9450
	<a href="mailto:joel.cherry@cox.net">joel.cherry@cox.net</a>	
Frank Falgiano	CEFCO Enterprises	703-491-1017
Mike W. Hess	Classic Coins & Collectibles	703-330-3747
J.W. Kennedy	Kennedy's Stamps and Coins	703-569-7300
John Koebert	Butternut	703-802-0252
John Manley	German Coins	202-546-5256
Bob Mitchell	RKT Coins	703-268-5234
	<a href="mailto:RKTcoins@cox.net">RKTcoins@cox.net</a>	
Mike Olson	MCO Consultants – Numismatics	703-644-5375
Bob Patterson	Bob's Coins of Virginia	703-501-5095
Andy & Alynne Skrabalak	Angel Dee's Coins & Collectibles	
	<a href="http://www.angeldees.com">www.angeldees.com</a>	703- 580-6969
T.J. Shea	Penny Pincher Coins	703-383-1414
John Sullivan	Cameo Coins and Collectibles	703-281-7053
	<a href="mailto:camcoins@aol.com">camcoins@aol.com</a>	
George Watson	George A. Watson	703-843-7072
Wayne Wilcox	Wayne's Coin & Currency	703-920-2385
Jason Zeibel	Z&Z Coins	703-598-1340

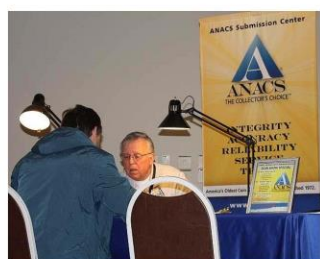


# ALEXANDRIA COIN CLUB SHOW

## Saturday, February 7, 2015



*American  
Legion Post  
176  
Springfield  
Virginia*





## **Special Announcement**

### **Revised Auction Rules to be voted upon at February Meeting**

#### **ACC Board Recommends 5% Fee for Reserve Bids (was 2%)**

**(A)** The current fees are as follows for reserve bids:

If a reserved bid is placed on a coin and it sells the charge will be 5% of the highest bid. If it does not sell the charge will be 2% of the reserve bid price.

Example: \$50 coin with a \$30 reserve. If it sells for \$50 the seller would pay a fee 5% of the \$50 or \$2.50. If it did not sell the seller would pay 2% of the \$30 or \$0.60.

**(B)** Suggested change:

If a reserved bid is placed on a coin and it sells the charge will be 5% of the highest bid. If it does not sell the charge will be 5% of the reserve bid price.

Example: \$50 coin with a \$30 reserve. If it sells for \$50 the seller would pay a fee 5% of the \$50 or \$2.50. If it did not sell the seller would pay 5% of the \$30 or \$1.50 (just like it sold for \$30).

## **Guidelines for submitting coins for the monthly auction**

When submitting coins for the monthly auction always try to use the printed club submission form. The club form lists the current submission rules. To conserve printing costs, take one or two blank forms and make addition copies as needed. Submit individual coin in a flip or 2x2 holder. Flatten the staples of a 2x2 holder with pliers. This will protect your coins as well as the submissions of others from damage caused by the raised staples when coins are stacked for transporting. When completing the submission form always verify the date and mint mark on your coin. Coins submitted without a reserve minimum tend to sell for higher prices than submissions with a reserve that's close to the actual value.



## **Estimating Value of Auction Lots:**

Coin World values is a retail price guide for problem free coins that are nice for the grade. A coin may have the bold detail of an extremely fine (EF) coin but if it's corroded, bent, and holed, it doesn't have the value of an EF coin.

Problem coins are downgraded sometimes two or three grades depending on the severity of the problem. Some extremely rare coins, a 1793 Chain Cent for example, are expected to be found with problems and are not downgraded for minor problems. Other more common coins may be downgraded to only melt (or cull) value for severe problems. Cull coins are not appropriate for auction except in the case of a group lot with a melt value of at least \$15.00 (current club auction minimum value).

Coins may be net graded because of severe problems or may be listed at the technical grade with the problem noted. It is up to the buyer to determine what price he is willing to pay, the estimated value is the opinion of the auction chairman using Coin World values magazine.

**February 2015 Auction Lots**

#	Item	Description	Min Bid	Estimated Value
1	2c	1868 VG		20
2	3c Ni	1866 F		20
3	3c Sil	1852 G		28
4	5c	1913 Ty 1, EF		22
5	25c	5pc, 1925,1926,1927,1928,1929 all VG		40
6	25c	4pc, 1926-S,1928-S,1929-S,1930-S all VG		34
7	Comm	1946 B.T.Washington Half Dollar, AU		17
8	mixed	5pc:10c 1907,1916 G;25c 1925 VG;50c 1907-O G,1942 VF		42
9	50c	1854-O VG		55
10	\$1	1883 VG		26
11	\$1	1926-S AU		36
12	\$1	1878-S in NGC MS63 holder		100
13	Comm	1994 Women in Military, PCGS MS69 signed by Jessica Lynch		80
14	Comm	1987-S Constitution 2pc Proof Set, Silver Dollar & \$5 Gold		450
15	mixed	50c:1942-D VG,1964(2),7-1970-82 PF's:Austria & Finland		38
16	50c	4pc, 1912-D G,1947-D F,1954 VG,1964 UNC		46
17	50c	3pc, 1943,1943-S,1947, all F		20
18	Sets	4 Proof Sets; 1992,1995,1997,1999		42
19	1c	1865 fancy 5, EF	20	40
20	1c	1871 VF environmental damage	15	35
21	1c	1882 EF	18	25
22	1c	1884 AU cleaned	30	40
23	1c	1886 Ty1, EF	75	125
24	1c	1891 AU55	21	30
25	1c	1894 AU58	54	75
26	Comm	1920 Pilgrim Half Dollar EF cleaned	32	50
27	10c	1896-S in ANACS G4 holder	45	80
28	1/2c	1810 VG obv damage	38	58
29	1c	12pc,1857,1858 SL,10-1859; avg G w/problems		65
30	5c	1883 w/cents VG10	17	30
31	5c	1906 EF	22	32
32	5c	1838 w/stars half dime VF	21	32
33	5c	1851-O VF	27	40
34	5c	1872-S (S Below Bow) EF	24	45
35	25c	1905-S EF	70	125

Continued on Next Page



## February 2015 Auction Lots

#	Item	Description	Min Bid	Estimated Value
36	50c	1946-D MS62	40	60
37	Comm	1936 Cleveland & Great Lakes, UNC cleaned/polished	60	90
38	5c	2pc, 1936 MS62, 1937-D MS64	25	92
39	10c	5pc, 1925,34,36-D,41,43; EF to BU some w/FSB		120
40	25c	3pc, 1935-S, 1939-D EF, 1947-S MS65	40	77
41	50c	3pc, 1916 VG, 1920-D G, 1943 MS63		126
42	50c	3pc, 1971-S, 1973-S, 1997-S; all Proof 65		15
43	mixed	16pc-5c 1897-1912-D avg G; 1980 1c BU roll, Jamaica 1969 1/2 & 1c		30
44	\$1	1996 Silver Eagle UNC		115
45	Comm	1982 George Washington Half, Proof		15
46	Set	1998 Silver Proof Set		26
		~ ~ END ~ ~		